



Mt Zion Blvd



Mt Zion Pkwy

Richardson Pkwy



Atlanta Land Group



LAND FOR SALE

# Richardson Pkwy

Morrow, GA 30236

**Rosetta Dillard**

404.680.1895

rdillard@AtlantaLandGroup.com

**Robert Armstrong**

404.790.6100

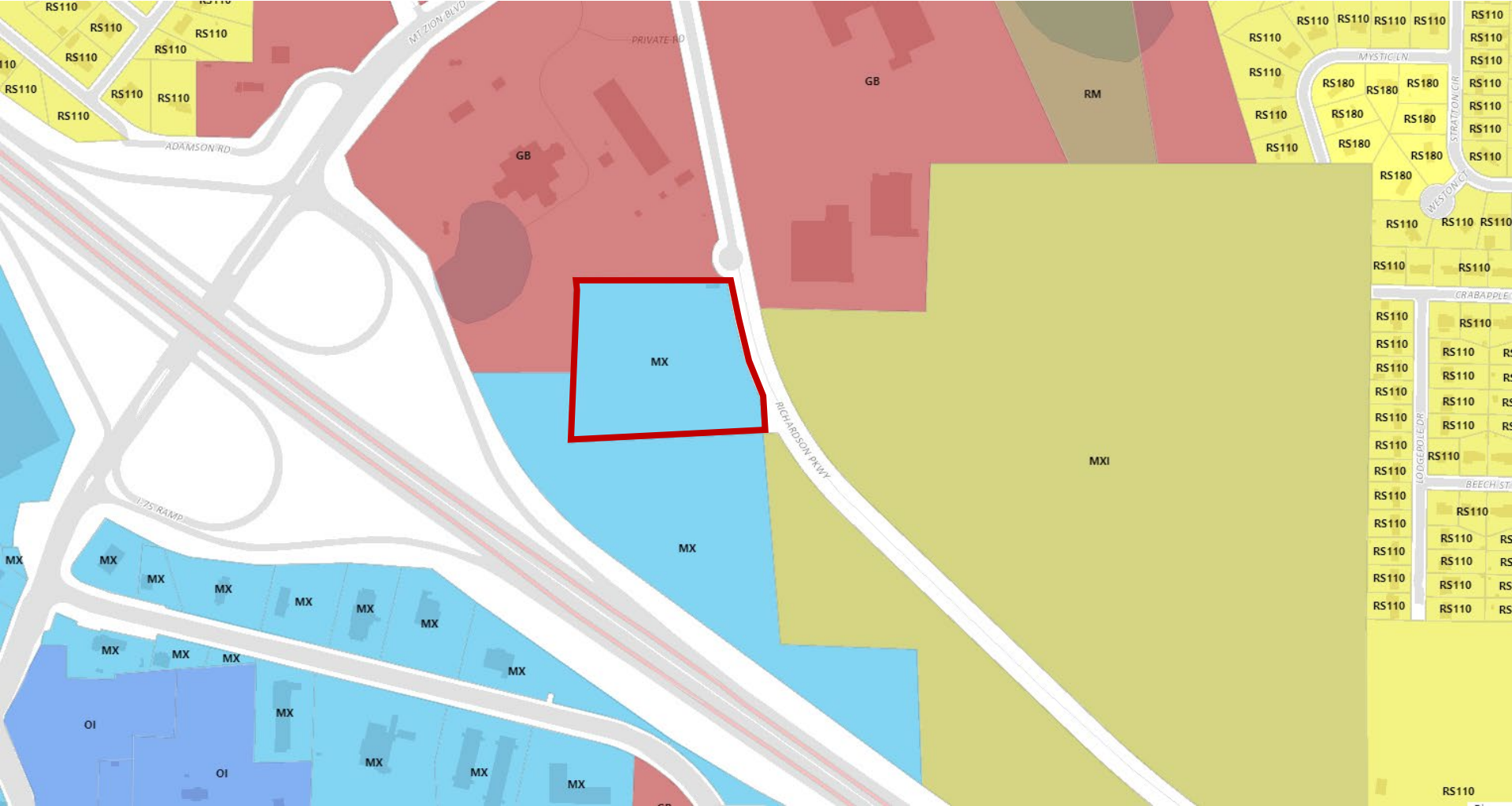
rarmstrong@AtlantaLandGroup.com

# PROPERTY OVERVIEW

- +/- 7.02 Acres
- Clayton County
- Zoned MX – Mixed Use
- All Utilities Available
- +/- 524 ft Frontage on Richardson Pkwy
- Adjacent to Landmark Dealership and Future Apartment Development
- 24,200 ATD (20) on Mt Zion Blvd
- 140,000 ATD (20) on I-75
- Less than 1 mile from Exit 231 on I-75



# ZONING MAP





# SUBMARKET AERIAL



Southlake Mall



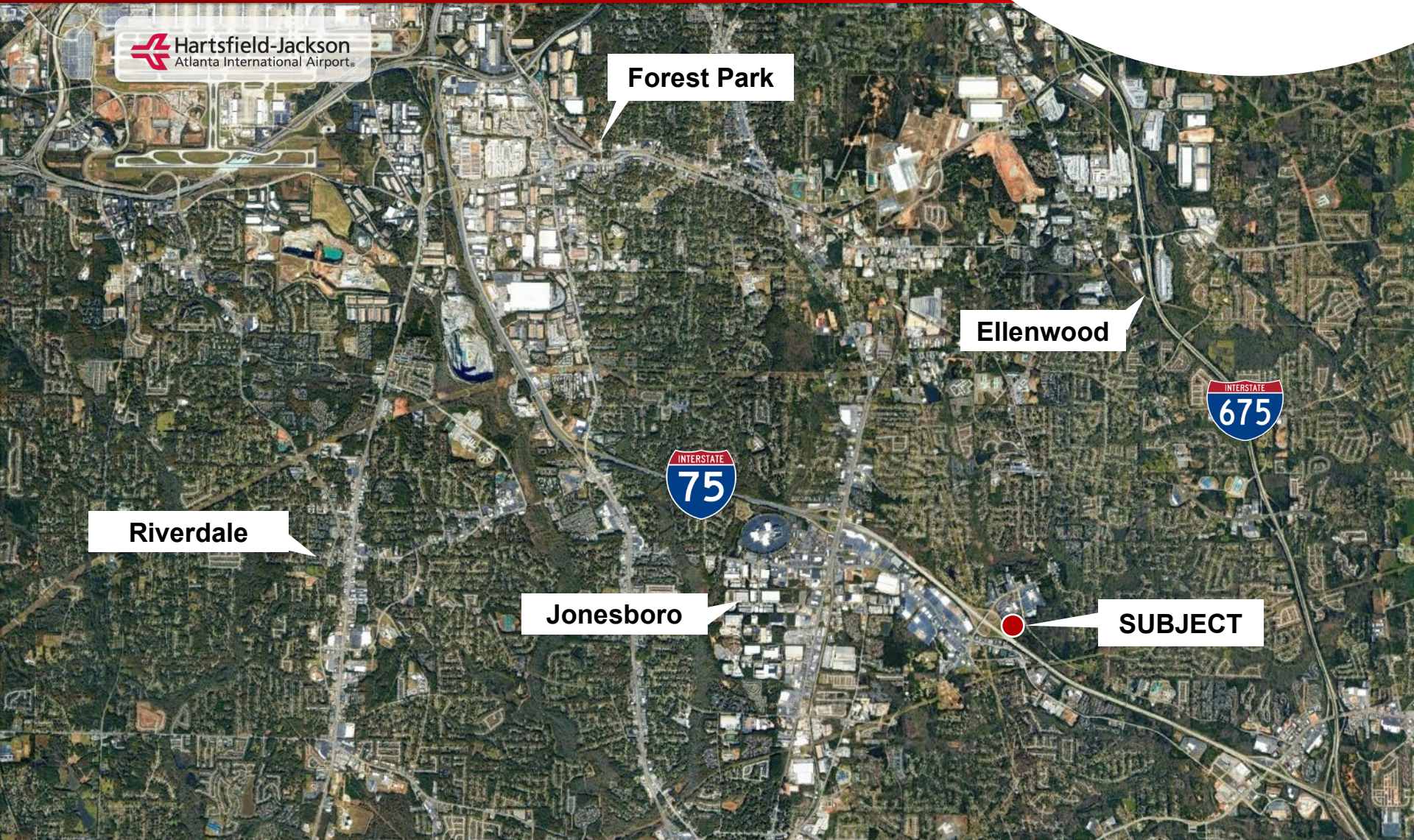
SUBJECT



Jonesboro Rd

Mt Zion HS

# PROXIMITY MAP



Hartsfield-Jackson  
Atlanta International Airport

Forest Park

Ellenwood

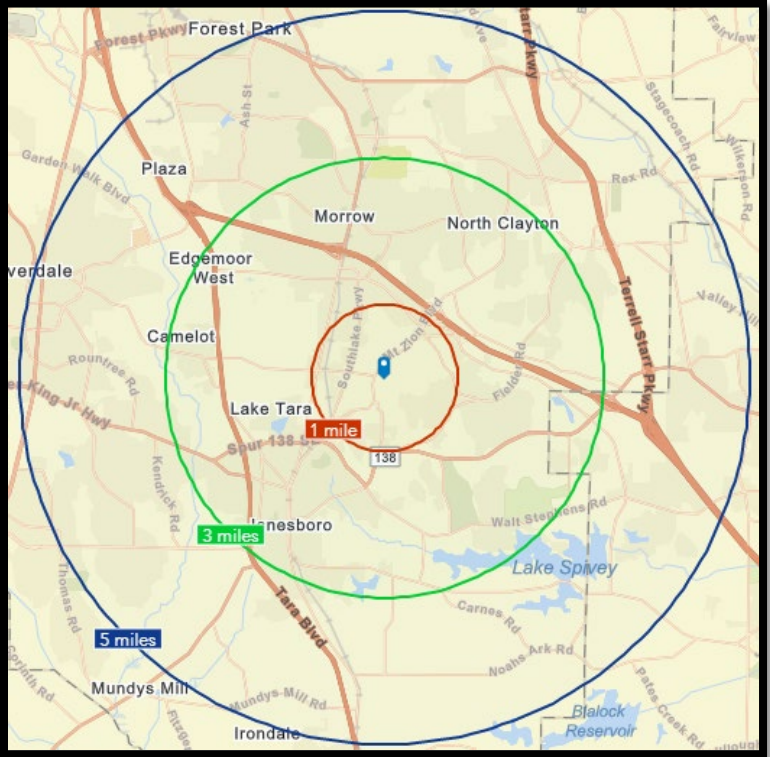
Riverdale

Jonesboro

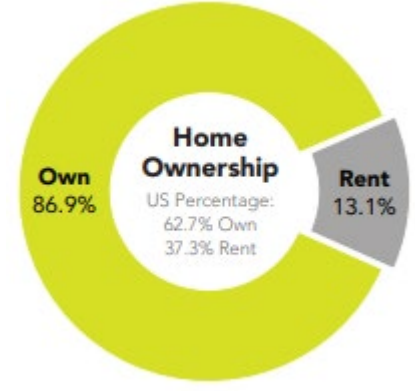
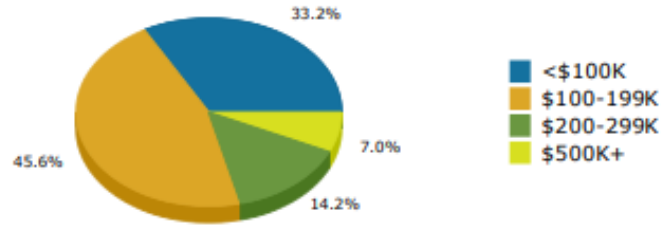
SUBJECT

# Demographics Esri 2020

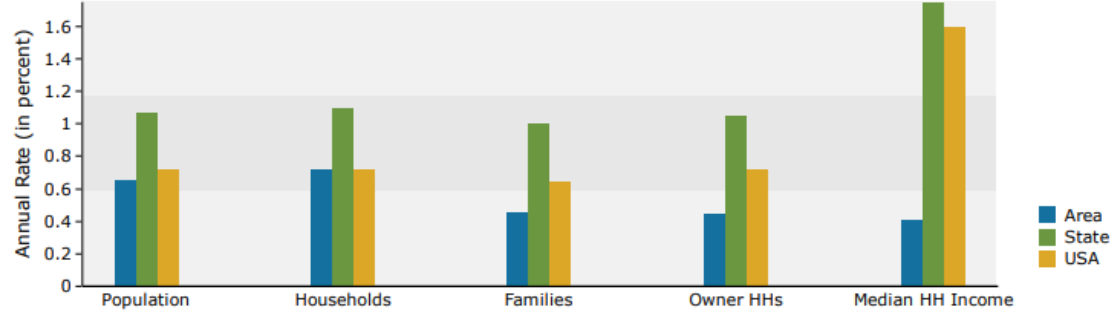
	Population	# of Households	Avg Household Income	Median Age
<b>1 Mile</b>	4,525	2,008	\$59,159	37
<b>1-3 Miles</b>	67,903	24,664	\$57,043	33
<b>3-5 Miles</b>	181,148	63,306	\$60,926	33



2020 Home Value



Trends 2020-2025



2020-2025 Annual Growth Rate

