



Atlanta
Land
Group



Stonecrest Truck Parking

Stonecrest, GA

Jay Leslie

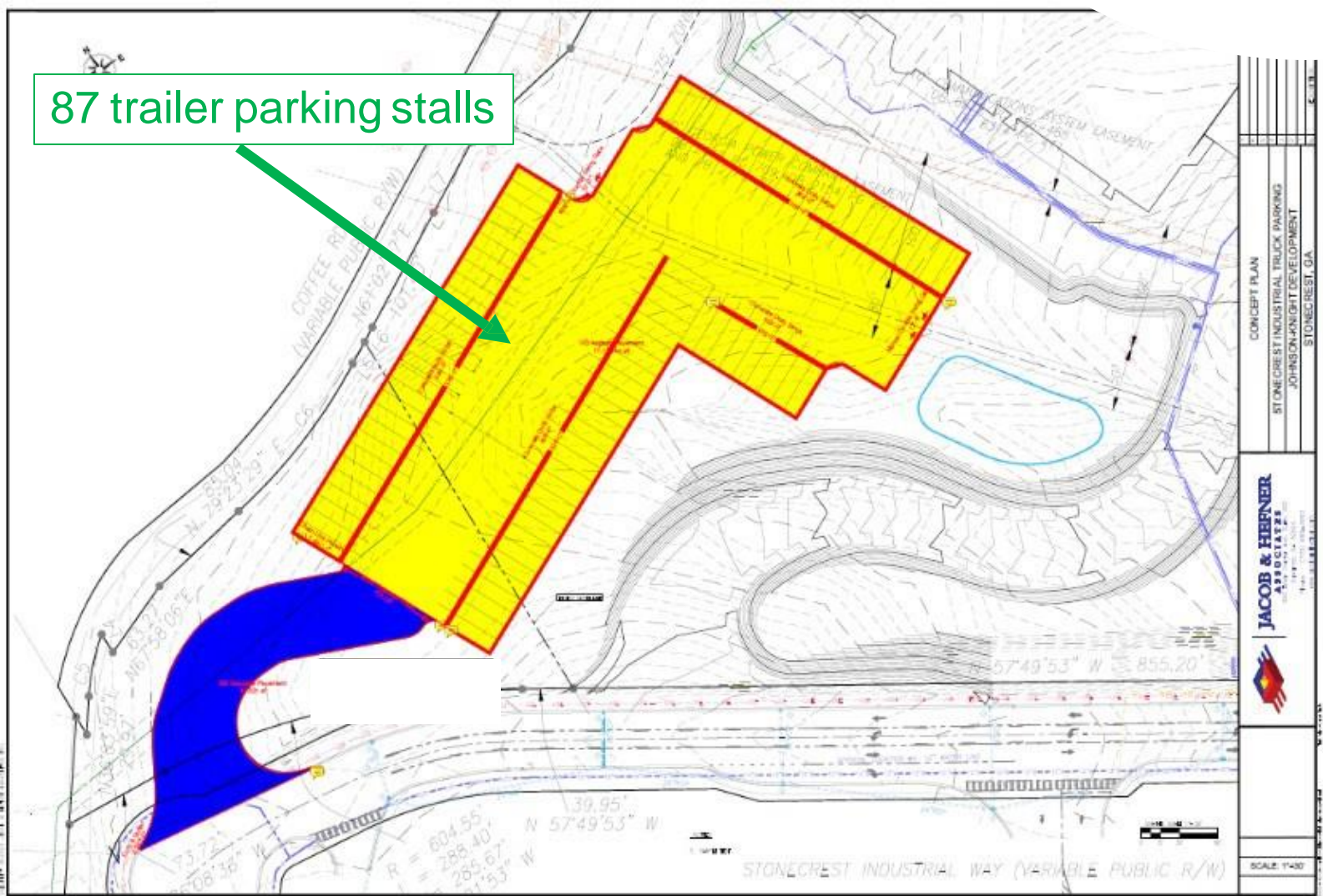
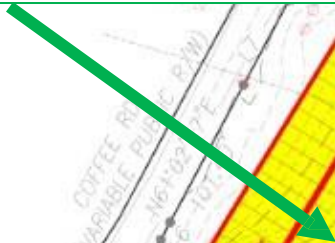
404.277.9191

jleslie@AtlantaLandGroup.com

Site Plan



87 trailer parking stalls



CONCEPT PLAN
STONECREST INDUSTRIAL TRUCK PARKING
JOHNSON-HOUGHT DEVELOPMENT
STONECREST, GA

JACOB & HEFNER
ASSOCIATES
PLANNERS, ARCHITECTS
1100 N. W. 11th St., Suite 100
Atlanta, GA 30309
404.525.1111

SCALE: 1"=40'

PROPERTY OVERVIEW

• **Location:** 6831

Stonecrest Industrial Way,
Stonecrest, GA 30058

• **Property Status:** Zoned,
Partially Developed Land

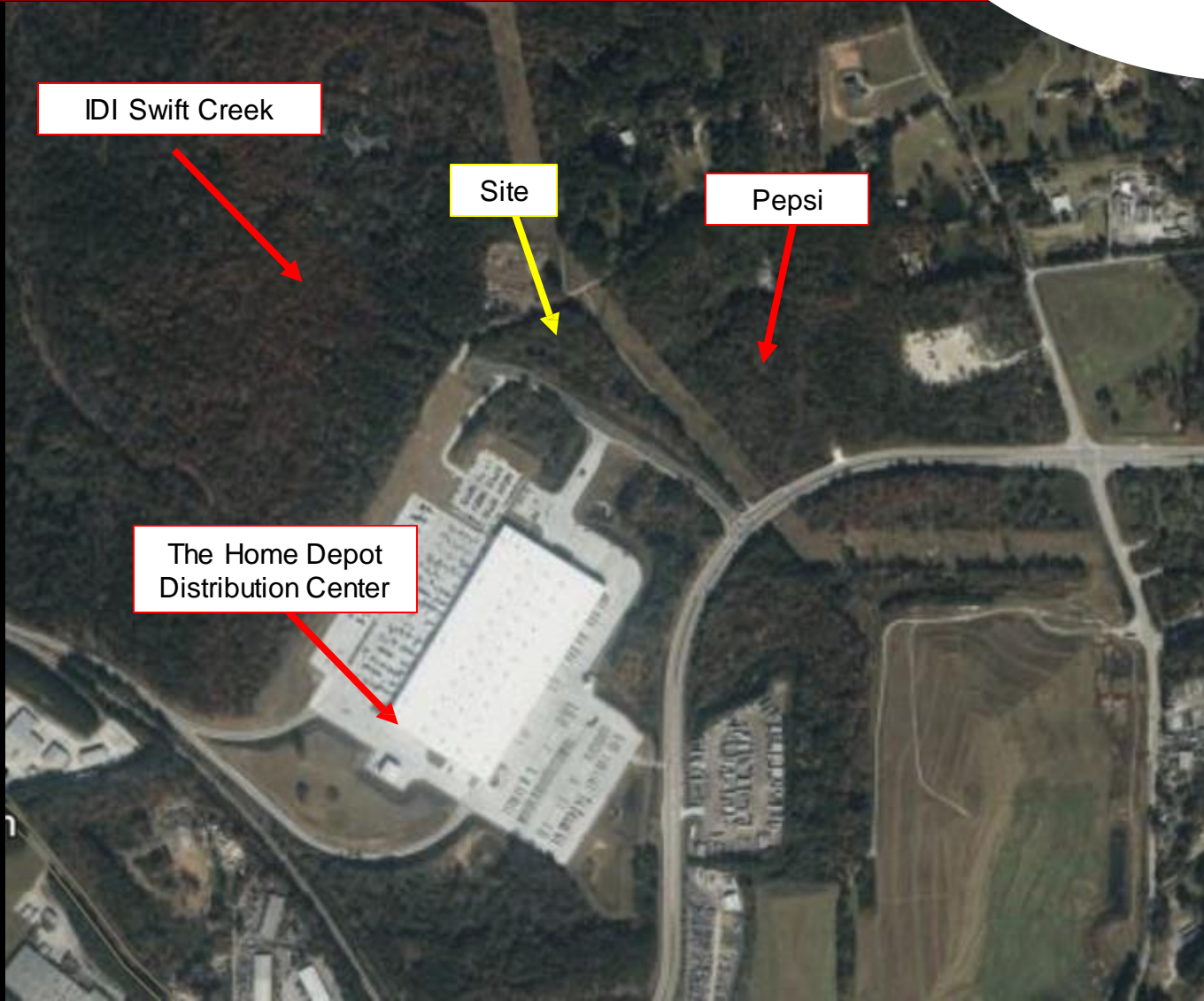
• **Parcel ID:** To be
subdivided from Dekalb
parcel ID 16 132 02 003

- Property Size: +/- 6 acres
- Zoned M City of Stonecrest
- Master detention
- Partially graded
- +/- 87 trailer parking stalls
- Access from Stonecrest Industrial Way
- Adjacent to newly constructed Pepsi distribution center
- Adjacent to Home Depot distribution center
- Adjacent to IDI Swift Creek Logistics Center development
- All utilities available

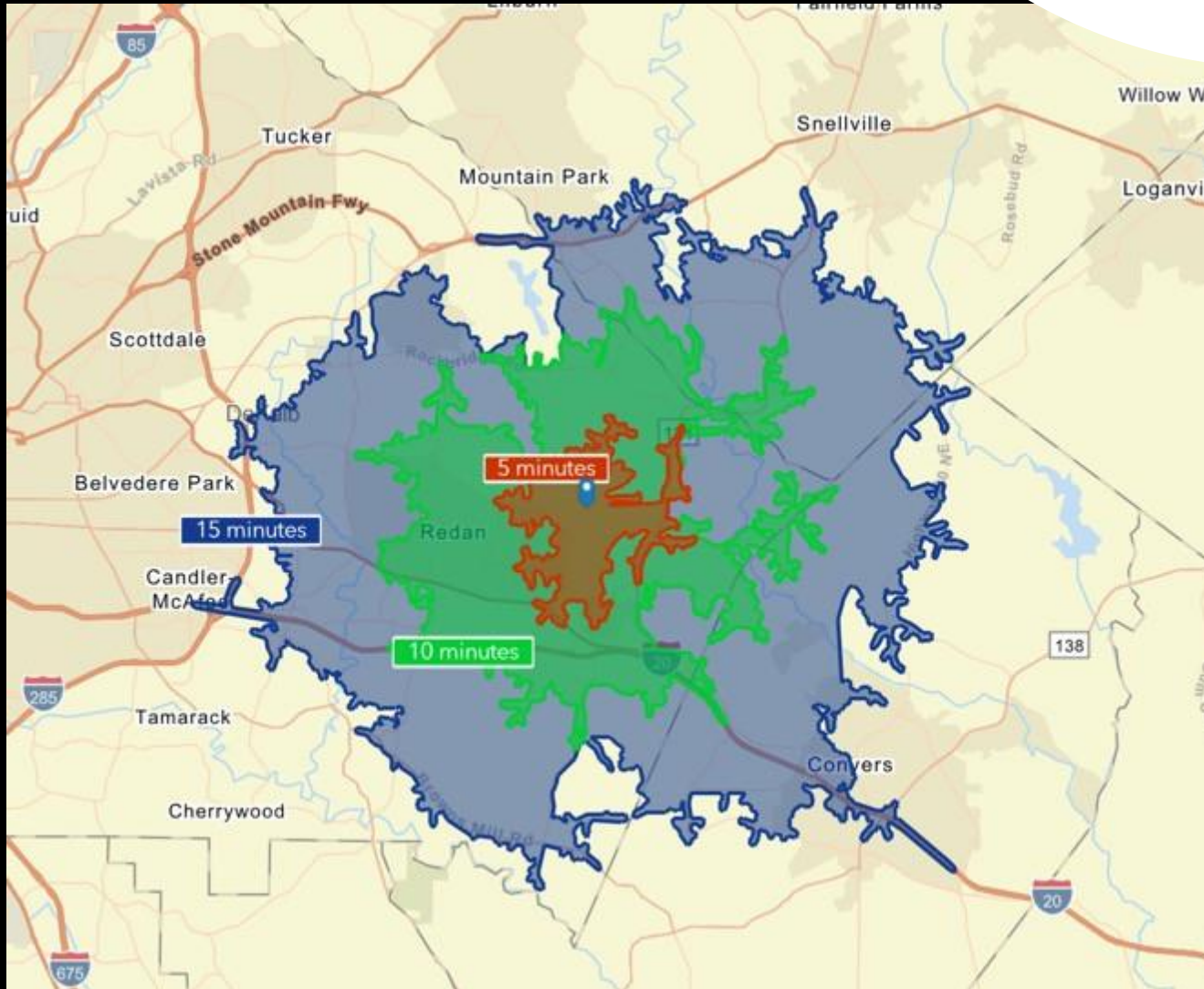
Listing Price: \$1,450,000



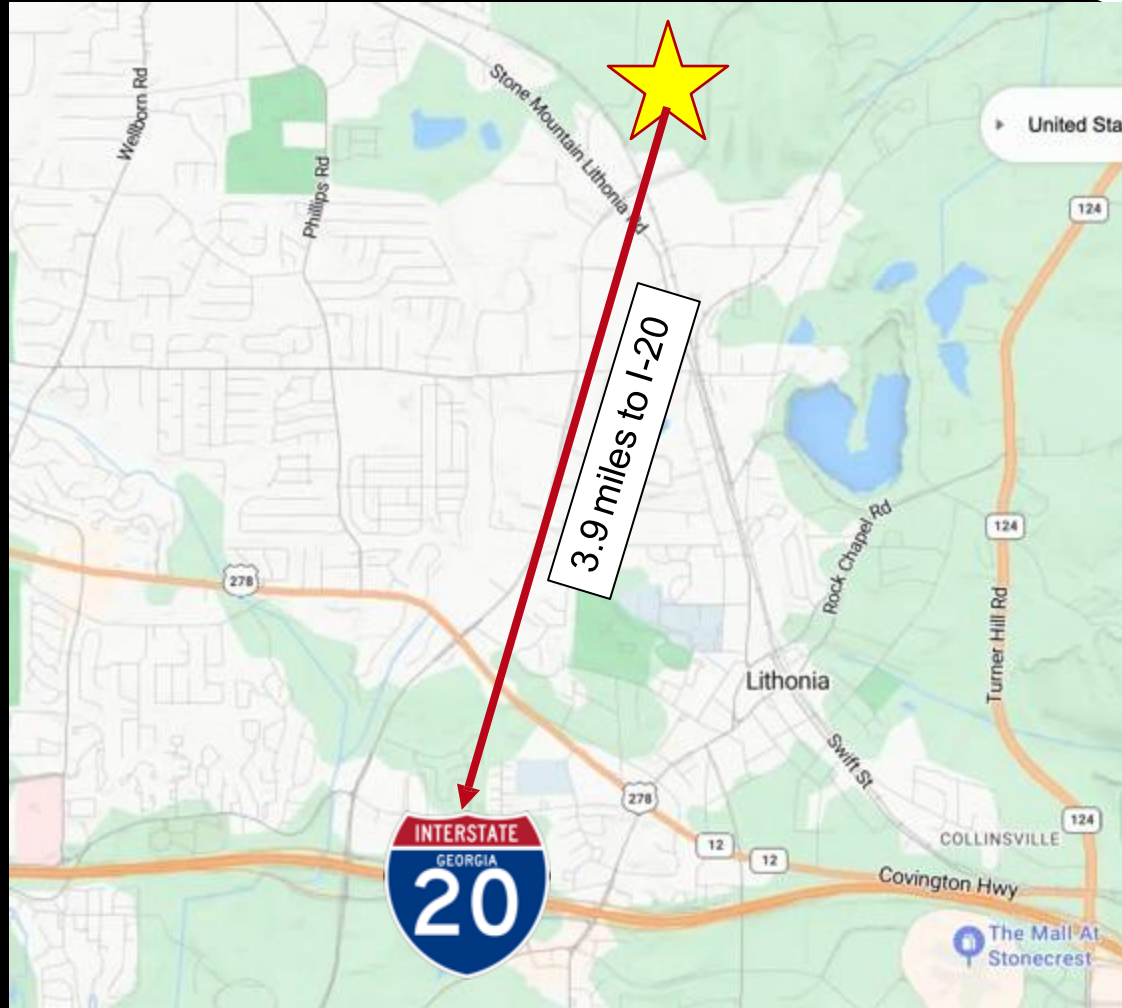
Aerial Map



Drive Time Map



Distance Map

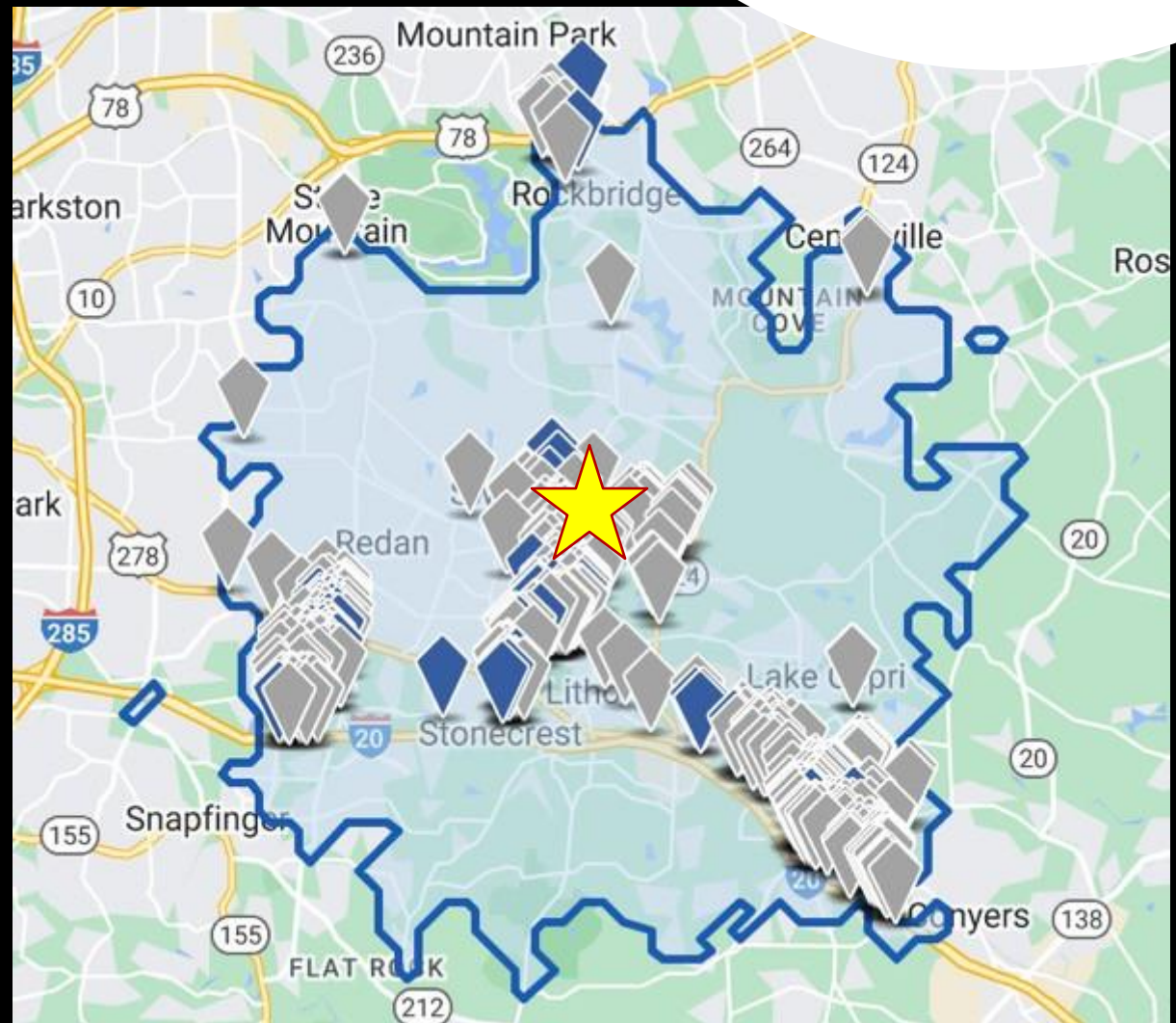


Local Industrial Space (15-minute drive radius)

Total Industrial
SF: 1,694,803

Average Industrial
Space SF: 43,456

405 industrial sites
within a 15-minute
drive from the
Subject Property.





Jay Leslie

404.277.9191

jleslie@AtlantaLandGroup.com



Atlanta
Land
Group

